

# Shoppes on the Parkway

## 1250 Volunteer Parkway, Bristol, TN

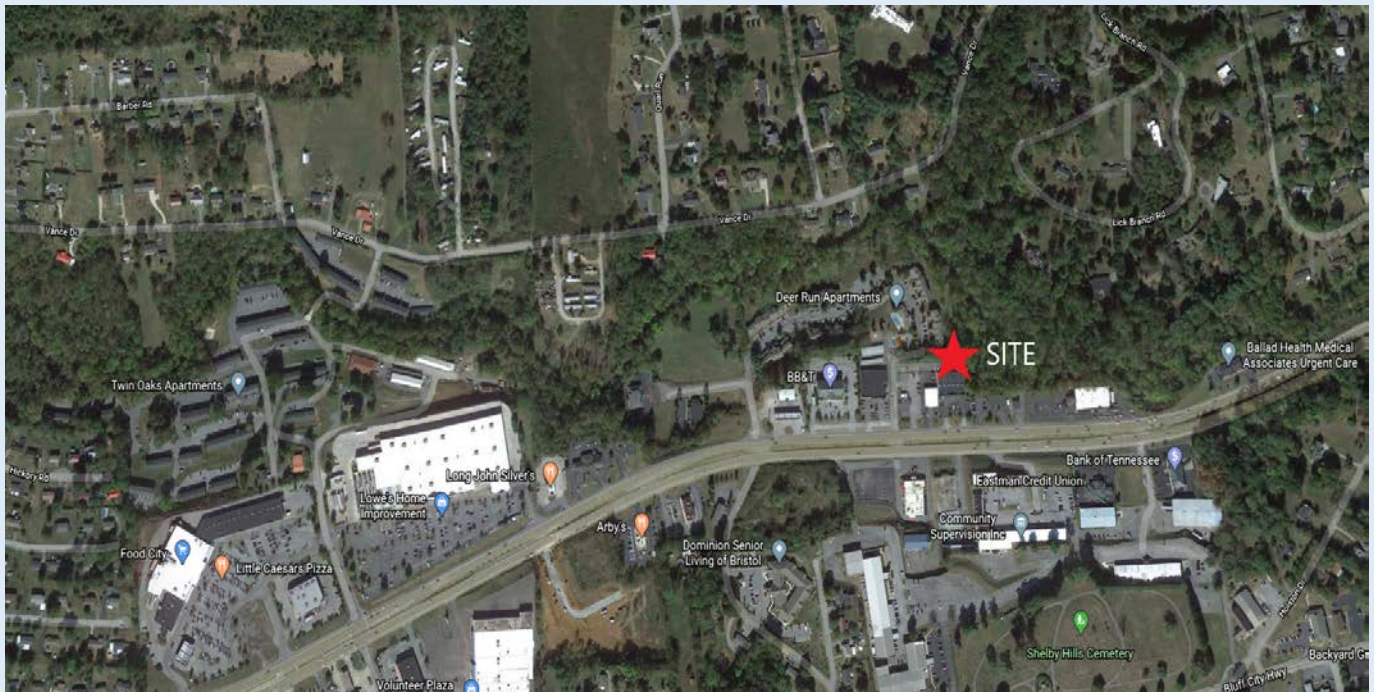


### Property Information

- Price available upon request
- Total Square Footage: 11,200 sf
- Traffic count @ Volunteer Parkway: 23,000 – 25,000
- Excellent visibility
- High density area, conveniently located near large subdivisions and apartment complexes, as well as big box retailers.

### Demographics (BASED ON PROJECTIONS)

- 1 mile radius – Population: 2,791  
Income: \$55,380
- 3 mile radius – Population: 27,521  
Income: \$45,220
- 5 mile radius – Population: 52,445  
Income: \$48,510



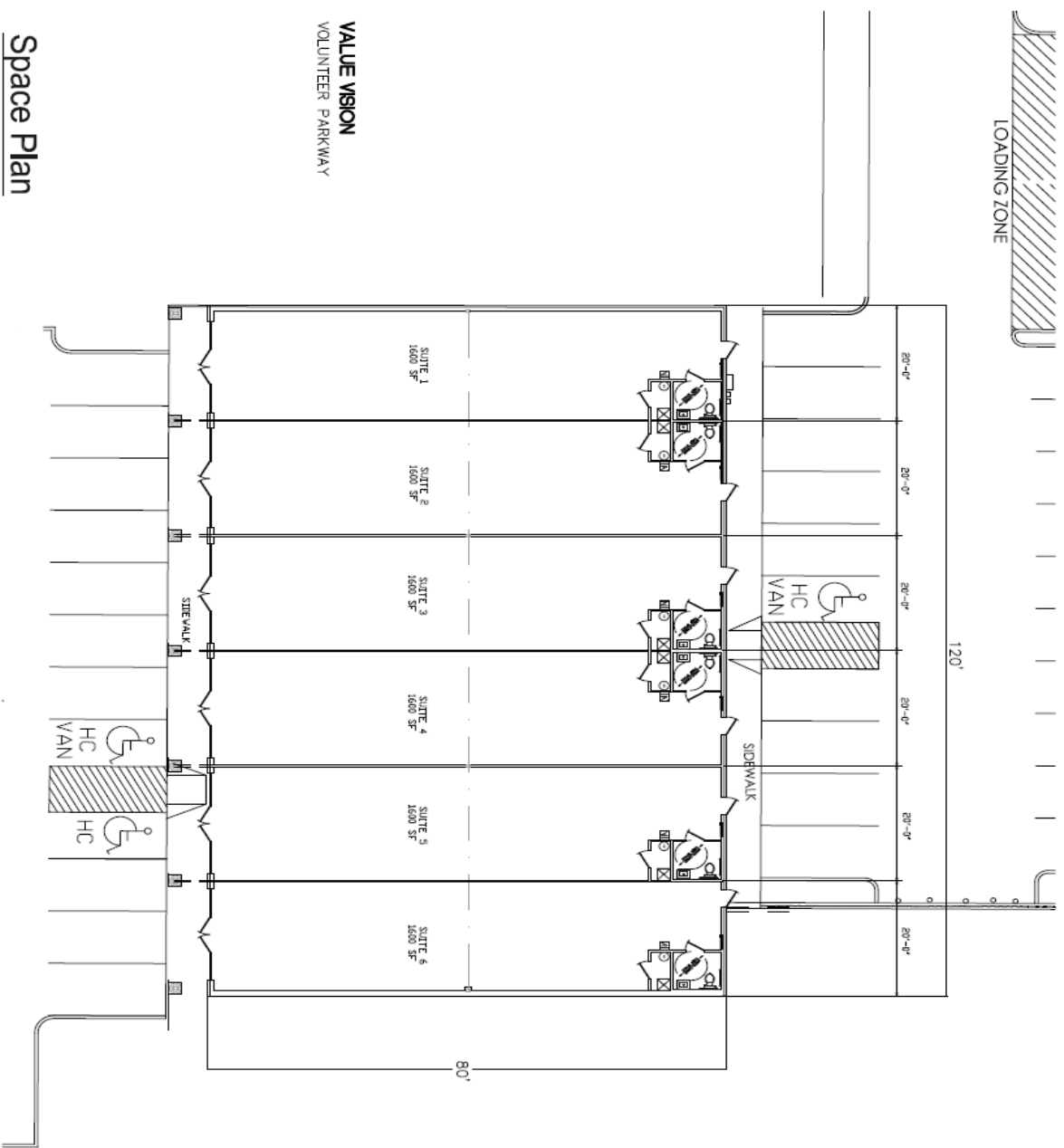
3760 [www.kbmcp.com](http://www.kbmcp.com)

Leasing Team  
1550 Highway 126  
Bristol, Tennessee

(423)-968-3321

**Space Plan**  
 80' x 120' = 11,200sf

**VALUE VISION**  
 VOLUNTEER PARKWAY



**OVERALL SPACE PLAN**  
 SCALE: 1/8" = 1'-0"

This drawing is the property of TRUE LINE Construction Company, LLC. It is to be used only for the project and site identified on this drawing. No part of this drawing may be reproduced or transmitted in any form or by any means electronic or mechanical, including photocopying, recording, or by any information storage and retrieval system, without the prior written permission of TRUE LINE Construction Company, LLC.

NO.	DATE	DESCRIPTION

NO.	DATE	DESCRIPTION

A NEW TENANT SPACE PLAN FOR:  
**SHOPPES ON THE PARKWAY**  
 1250 VOLUNTEER PARKWAY  
 BRISTOL, TN 37620

**KBM** commercial properties  
 keeping you in our sites  
 1550 HIGHWAY 126 BRISTOL, TN 37620  
 423-968-3311  
 MANAGING COMPANY

**TRUE LINE**  
 CONSTRUCTION COMPANY, LLC  
 COMMERCIAL, RETAIL, RESIDENTIAL, & CHURCH BUILDINGS  
 1550 HIGHWAY 126 BRISTOL, TN 37620 423-968-9164  
 www.truelineinc.com



DATE: 5/2/12

SCALE: 1/8" = 1'-0"

2.1

PROJECT: 512

DESIGNER: SS

CHECKED: CM